

43 Raid Polski



Championnat d'Europe des Conducteurs

WROCLAW - 1986 - 07 - 3-6



L'edition officielle
The official edition
Wydanie oficjalne

43 Rajd
Polski

4 - 6 lipca 1986

WROCLAW

ELIMINACJE 43 STRAJD EUROPY
CHAMPIONAT POLSKI EUROPE

CLASSEMENT GENERAL
GENERAL CLASSIFICATION
KLASYFIKACJA GENERALNA

I. Branislav KUZMIO YU
Rudi SALI YU
RENAULT 5 Turbo

II. Andrzej Resultsats PL
Krzysztof Results YS PL
RENAULT Wyniki bo

III. Janusz SZERLA PL
Marek OZIEBLO PL
POLONEZ 2000 C

WROCLAW 4 - 6 Juillet 1986
4 - 6 July 1986
4 - 6 Lipca 1986

43 Rajd
Polski

4 - 6 lipca 1986

WROCLAW

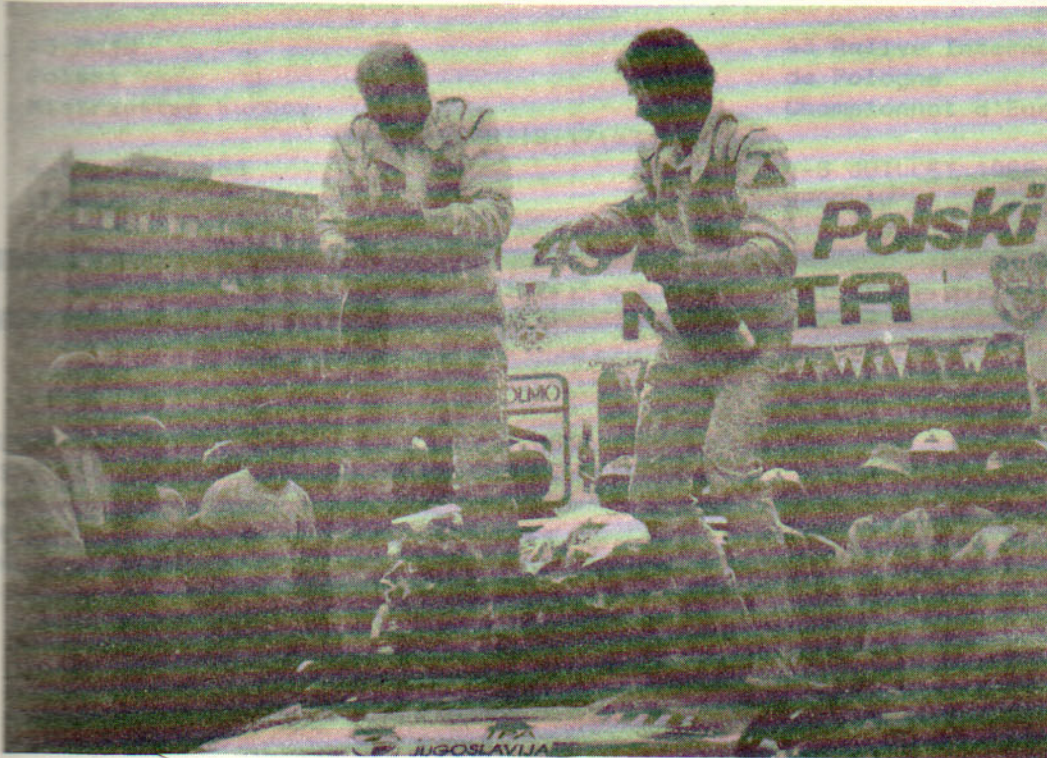
ELIMINACJE MISTRZOSTW EUROPY
CHAMPIONNAT D'EUROPE

CLASSEMENT GENERAL
GENERAL CLASSIFICATION
KLASYFIKACJA GENERALNA

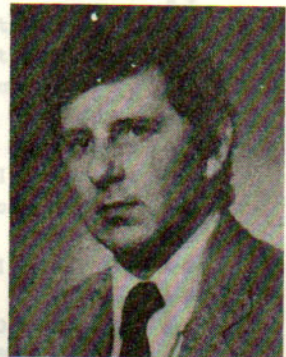
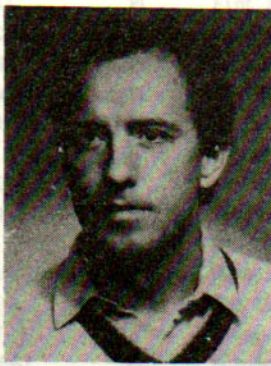
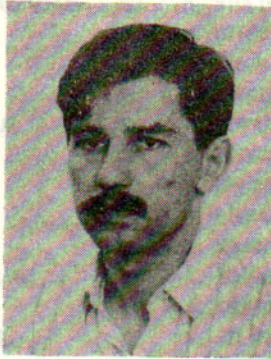
I. Branislav KUZMIC YU
Rudi SALI YU
RENAULT 5 Turbo

II. Andrzej KOPER PL
Krzysztof GEBORYS PL
RENAULT 11 Turbo

III. Janusz SZERLA PL
Marek OZIEBLO PL
POLONEZ 2000 C



1.	T. NOKKAINEN	SF	P. LEPPALA	SF	Talbot Lotus	8-10
2.	V. SOOITS				Lada VTS	8-9
3.	V. BLAZNA				Lada 2105 MTX	8-9
4.	M. BUBLEVICZ	PL	J. MAJTYMA	PL	Polonez 2000 C	8-9
5.	P. GUTHARD	F	C. GUTHARD	F	Citroen Visa Chrono	8-9
6.	G. PETROV	BG	I. TOMOV	BG	Lada VTS	8-9
7.	M. SHERALI				Lada VTS	8-9
8.	L. LA				Polonez 2000C	8-9
9.	STEV				Lotus VTS	8-9
10.	NY				Polonez 2000 C	8-9
11.	NOKKI				Lada VTS	8-9
12.	GLOV				Lada VTS	8-9
13.	ESA				Skoda 130 LR	8-9
14.	DEL				Ford Escort	8-9
15.	DDO				Lada VTS	8-9
16.	YENA				Lada VTS	8-9
17.	ANGIL				Lada VTS	8-9
18.	K. NREK	PL	L. SARAN	PL	Polonez 2000	8-9
19.	V. NOWIELSKI	BG	B. NITOV	BG	Lada VTS	8-9
20.	Z. PIPUTA	CS	B. GOSTYPIED	CS	Skoda 130 LR	8-9
21.	Z. SIEMCZYK	PL	A. SIKORSKI	PL	Polonez 2000	8-9
22.	A. BRASSEY	DOP	B. KRITZEL	DDR	Lada VTS	8-9
23.	K. DAKE	DE	J. FALVED	CS	Skoda 130 LR	8-9
24.	P. PRZYBYLSKI	PL			Polonez 2000	8-9
25.	M. JAWORSKI	PL	J. STELECKI	PL	Fiat 7 1/2	8-9
26.	B. WIZGICZ	PL	M. WIZGICZ	PL	Skoda 130 LR	8-9
27.	J. ADERTSLOANSKI	PL	M. PASLANSKI	PL	Skoda 130 LR	8-9
28.	A. WITKOWICZ	PL	A. TURCZYNSKI	PL	Skoda 130 LR	8-9
29.	K. KOLBY-WAGNER	DK	T. WILDER	DK	Skoda 130 LR	8-9
30.	F. FEELLING	D	H. KRAFER	D	Skoda 130 LR	8-9
31.	H. BISCHOFF	D	H. SKALTZ	D	Skoda 130 LR	8-9
32.	M. SPONHEISSLER	D	K. GRUBACK	D	Skoda 130 LR	8-9
33.	T. DANH	D	K. MALM	D	Skoda 130 LR	8-9
34.	G. WRZECIAN	F	A. WRZECIAN	F	Skoda 130 LR	8-9
35.	M. SACHNICKI	PL	K. SKALSKI	PL	Skoda 130 LR	8-9
36.	J. JANUSZ	PL	SZERLA	PL	Skoda 130 LR	8-9
37.	M. MAREK	PL	OZIEBLO	PL	Skoda 130 LR	8-9



III. Janusz SZERLA PL
Marek OZIEBLO PL

II. Andrzej KOPER PL
Krzysztof GEBORYS PL

I. Branislav KUZMIC YU
Rudi SALI YU

43 Rajd
Polski
Mistrzostwa Europy

06-07-1986/20:49:48

4-6 LIPCA 1986
WROCLAW

43 Rallye International
de Pologne
Championnat d'Europe

4-6 JUILLET 1986
WROCLAW

ENSCH Computer Service, Luxembourg

WYDRUK LISTY STARTOWJ 43 RAJDU POLSKI
LISTE DE DEPART DU 43 RALLYE DE POLOGNE

№ st. No	1-szy Kierowca Pilote	Nar. Nat.	2-gi Kierowca Co-pilote	Nar. Nat.	Samochod Voiture	Gr-kl. Gr-cl.
1	M. PREGLIASCO	I	S. CAVALLERI	I	Lancia 037R	B-10
2	A. FERIANCZ	H	J. TANDARI	H	Audi Quattro	B-10
3	B. KRUPA	PL	P. MYSTKOWSKI	PL	Renault 5 Turbo GT	A-6
4	A. KOPER	PL	K. GEBORYS	PL	Renault 11 Turbo	A-6
5	B. KUZMIC	YU	R. SALI	YU	Renault 5 Turbo	B-9
7	V. SOOTS	SU	T. POUTMAKER	SU	Lada VFTS	B-9
8	V. BLACHNA	CS	P. SCHOVANEK	CS	Lada 2105 MTX	B-9
9	M. BUBLEWICZ	PL	J. WOJTYNA	PL	Polonez 2000 C	B-9
11	G. PETROV	BG	I. TONEV	BG	Lada VFTS	B-9
12	E. TOUMALIAVITCHUS	SU	P. VIDEIKA	SU	Lada VFTS	B-9
14	J. SZERLA	PL	M. OZIEBLO	PL	Polonez 2000C	B-9
15	S. HRISTOV	BG	S. RADEV	BG	Lada VFTS	B-9
17	A. PIKKOUOUS	SU	A. TIMOUSK	SU	Lada VFTS	B-9
18	N. NIKOLOV	BG	K. PETROV	BG	Lada VFTS	B-9
19	P. JANEBA	CS	J. KRECMAN	CS	Skoda 130 LR	B-9
21	R. RUJTEL	SU	T. VOUNN	SU	Lada VFTS	B-9
22	I. TOPLODOLSKI	BG	A. TCHAKAROV	BG	Lada VFTS	B-9
23	I. TAMMEKA	SU	A. KOULGEEV	SU	Lada VFTS	B-9
24	J. TRAJBOLD	CS	V. ZELINKA	CS	Skoda 130 LR	B-9
25	R. ADAMEK	PL	Z. BARAN	PL	Polonez 2000	B-9
26	V. NOVOSELSKI	BG	R. MITOV	BG	Lada VFTS	B-9
27	Z. PIPOTA	CS	O. GOTTPRIED	CS	Skoda 130 LR	B-9
28	T. SIEWCZYK	PL	A. SIKORSKI	PL	Polonez 2000	B-9
29	A. BLOSSEY	DDR	B. NOETZEL	DDR	Lada VFTS	B-9
30	M. DOLAK	CS	J. PALIVEC	CS	Skoda 130 LR	B-9
31	W. JANOWSKI	PL	I. BIELECKI	PL	Fiat X 1/9	B-9
32	J. WIERZBOLOWSKI	PL	M. PASLAWSKI	PL	Opel Kadett 2000	B-9
33	A. WITKOWICZ	PL	A. TURCZYNSKI	PL	Audi 80 Quattro	A-7
34	H. KOLBY HANSEN	DK	I. HILDEBRANDT	DK	Mitsubishi Lans.1800	A-7
35	F. FOELLING	D	H. KRAMER	D	Mitsubishi Lanser TB	A-7
36	H. BISCHOFF	D	H. SCHULZE	D	VW Golf GTI	A-6
41	T. DAHN	D	R. MALM	D	BMW 320i	A-6
42	C. WRZECIAN	F	A. WRZECIAN	F	VW Golf GTI	A-6
43	M. SADOWSKI	PL	K. SKALSKI	PL	FSO 1500	A-6
44	E. VESSTROM	S	M. SCHMIDT	S	Subaru 4 WD Touring	A-6
45	J. PAJDAK	PL	W. BERNECKI	PL	Toyota Corolla GT	A-6
47	R. CHALAS	PL	Z. ATLOWSKI	PL	FSO 1600	A-6
48	M. KOSTRZAK	PL	M. AUGUSTYN	PL	Toyota Corolla	N-2
49	A. BIALOWAS	PL	J. SEKOWSKI	PL	FSO 1600	A-6
50	L. ORSKI	PL	T. CHMIEL	PL	VW Golf	A-6
51	B. HERINK	PL	B. STEPKOWSKA	PL	FSO 1600	A-6
52	T. STAWOWCZYK	PL	W. STAWOWCZYK	PL	Polonez 1500	A-6
53	P. KUFREJ	PL	J. LIS	PL	FSO 1600	A-6

43 Rajd
Polski
Mistrzostwa Europy

4-6 LIPCA 1986
WROCLAW

43 Rallye International
de Pologne
Championnat d'Europe

4-6 JUILLET 1986
WROCLAW

06-07-1986/20:50:04

ENSCH Computer Service , Luxembourg

WYDRUK LISTY STARTOWJ
LISTE DE DEPART DU

43 RAJDU POLSKI
43 RALLYE DE POLOGNE

Nr st. No	1-szy Kierowca Pilote	Nar. Nat.	2-gi Kierowca Co-pilote	Nar. Nat.	Samochod Voiture	Gr-kl. Gr-cl.
55	D. POLETYLO	PL	K. GERITZ	PL	FSO 1600	A-6
56	W. STEC	PL	J. BIGOS	PL	Opel Manta	A-6
57	M. RYNDAK	PL	J. SOLTYS	PL	FSO 1500	A-6
58	J. PANICZ	PL	M. FLISOWSKI	PL	FSO 1600	A-6
59	H. KRYSTON	PL	L. CHLONICKI	PL	FSO 1500	A-6
64	M. ANDRE POYAUD	F	D. ANDRE POYAUD	F	Talbot 51 a	A-5
65	P. HUISMAN	SF	S. SALMINEN	SF	Toyota Starlet	A-5
66	B. KUREK	D	B. BURSKI	PL	Opel Kadett	A-5
67	W. CYGAN	PL	M. FICON	PL	PF 126p	A-5
68	E. UTH	DDR	V. HOFSSOMMER	DDR	W 353	A-5
69	B. LIEDTKE	D	F. LOHSE	D	Toyota Starlet	A-5
70	R. KEPKA	PL	J. BIASION	PL	PF 126p	A-5
71	S. STRAUCH	DDR	W. MARR	DDR	W 353	A-5
73	R. FROELICH	DDR	W. MAIER	DDR	W 353	A-5
77	U. TREUBERG	D	M. RADZIEJ	D	VW Golf GTI	N-3
79	R. REINDL	D	K. WENDEL	D	Toyota Corolla GT	N-2
81	A.CH. WOLF	D	D. SCHAFFRATH	D	Toyota Corolla GT	N-2
82	K.A. HAAVIKKO	SF	H.H. HAAVIKKO	SF	Peugeot 205 GTI	N-2
83	D.W. SCHULTZ	D	H. LOHNDORF	D	Toyota Corolla 16VGT	A-6
84	K. KOSITZKE	D	H. PEITZMEIER	D	Chrysler R4DC Sunb.	N-2
85	A. LUBIAK	PL	A. CHITRYNIEWICZ	PL	Toyota Corolla TH16v	N-2

43 Rajd
Polski
Mistrzostwa Europy

4-6 LIPCA 1986
WROCLAW

43 Rallye International
de Pologne
Championnat d'Europe

4-6 JUILLET 1986
WROCLAW

08-07-1986/18:42:07

ENSCH Computer Service , Luxembourg

KLASYFIKACJA GENERALNA - OFICJALNA
CLASSEMENT GENERAL - OFFICIEL

M-ce	Nr	1-szy Kierowca	Nar.	2-gi Kierowca	Nar.	Czas	Reznica	Kary	Samochod	Gr-k1.
Pl.	No	Pilote	Not.	Co-pilote	Not.	Temps	Ecart	Penal	Voiture	Gr-cl.
1	5	B. KUZMIC	YU	R. SALT	YU	2h59m29s			Renault 5 Turbo	B-9
2	4	A. KOPER	PL	K. GEBORYS	PL	3h 1m50s	0h 2m21s	1m 0s	Renault 11 Turbo	A-6
3	14	J. SZERLA	PL	M. OZIEBLO	PL	3h 2m41s	0h 3m12s		Polonez 2000C	B-9
4	12	E. TOUMALIAVITCHUS	SU	P. VIDEIKA	SU	3h 5m24s	0h 5m55s		Lada VFTS	B-9
5	19	P. JANEBA	CS	J. KREPMAN	CS	3h 5m52s	0h 6m23s		Skoda 130 LR	B-9
6	3	B. KRUPA	PL	P. MYSTKOWSKI	PL	3h 6m40s	0h 7m11s		Renault 5 Turbo GT	A-6
7	7	V. SOOTS	SU	T. POUTMAKER	SU	3h 8m21s	0h 8m52s		Lada VFTS	B-9
8	24	J. TRAJBOLD	CS	V. ZELINKA	CS	3h 8m53s	0h 9m24s		Skoda 130 LR	B-9
9	8	V. BLACHNA	CS	P. SCHOVANEK	CS	3h 9m33s	0h10m 4s		Lada 2105 MTX	B-9
10	21	R. RUUTEL	SU	T. VOUNN	SU	3h12m11s	0h12m42s		Lada VFTS	B-9
11	11	G. PETROV	BG	I. TONEV	BG	3h14m43s	0h15m14s		Lada VFTS	B-9
12	50	L. ORSKI	PL	T. CHMIEL	PL	3h14m51s	0h15m22s		VW Golf	A-6
13	79	R. REINDL	D	K. WENDEL	D	3h16m 0s	0h16m31s		Toyota Corolla GT	N-2
14	23	I. TANMEKA	SU	A. KULGEVEE	SU	3h20m12s	0h20m43s		Lada VFTS	B-9
15	85	A. LUBIAK	PL	A. CHITRYNIEMICZ	PL	3h21m35s	0h22m 6s		Toyota Corolla TW16v	N-2
16	18	N. NIKOLOV	BG	K. PETROV	BG	3h21m56s	0h22m27s	1m 0s	Lada VFTS	B-9
17	25	R. ADAMEK	PL	Z. BARAN	PL	3h26m19s	0h26m50s		Polonez 2000	B-9
18	38	F. FOELLING	D	H. KRAMER	D	3h26m31s	0h27m 2s		Mitsubishi Lanser TB	A-7
19	22	I. TOPLODOLSKI	BG	A. TCHAKAROV	BG	3h27m15s	0h27m46s		Lada VFTS	B-9
20	39	H. BISCHOFF	D	H. SCHULZE	D	3h27m33s	0h28m 4s		VW Golf GTI	A-6
21	68	E. UTH	DDR	V. HOFSPOMMER	DDR	3h28m23s	0h28m54s		W 353	A-5
22	54	P. KUFREJ	PL	J. LIS	PL	3h29m23s	0h30m23s		FSO 1600	A-6
23	43	M. SADOWSKI	PL	K. SKALSKI	PL	3h31m24s	0h31m55s		FSO 1500	A-6
24	64	M. ANDRE POVAUD	F	D. ANDRE POVAUD	F	3h32m52s	0h33m23s		Talbot 51 a	A-5
25	52	B. HERINK	PL	B. STEPKOWSKA	PL	3h34m21s	0h34m52s		FSO 1600	A-6
26	83	D.W. SCHULTZ	D	H. LOHNDORF	D	3h34m53s	0h35m24s	1m 0s	Toyota Corolla 16VGT	A-6
27	65	P. HUISMAN	SF	S. SALMINEN	SF	3h35m44s	0h36m15s	2m 0s	Toyota Starlet	A-5
28	37	H. KOLBY HANSEN	DK	I. HILDEBRANDT	DK	3h37m36s	0h38m 7s	12m 0s	Mitsubishi Lans.1000	A-7
29	17	A. PIKKOUOUS	SU	A. TIMOUSK	SU	3h37m54s	0h38m25s	21m 0s	Lada VFTS	B-9
30	29	A. BLOSSEY	DDR	B. NOETZEL	DDR	3h38m14s	0h38m45s		Lada VFTS	B-9
31	49	A. BIALOWAS	PL	J. SEKOWSKI	PL	3h39m33s	0h40m 4s		FSO 1600	A-6
32	41	T. DAHN	D	R. MALM	D	3h44m 6s	0h44m37s		BMW 320i	A-6
33	57	M. RYNDAK	PL	J. SOLTYS	PL	3h45m34s	0h46m 5s		FSO 1500	A-6
34	58	J. PANICZ	PL	M. FLISOWSKI	PL	3h46m41s	0h47m12s		FSO 1600	A-6
35	71	S. STRAUCH	DDR	W. HARR	DDR	3h47m59s	0h48m30s	2m 0s	W 353	A-5
36	44	E. VESTROM	S	M. SCHMIDT	S	3h49m25s	0h49m56s		Subaru 4 WD Touring	A-6
37	56	W. STEC	PL	J. BIGOS	PL	3h50m 3s	0h50m34s	1m 0s	Opel Manta	A-6
38	73	R. FROEHLICH	DDR	W. MAIER	DDR	3h57m36s	0h58m 7s	12m 0s	W 353	A-5
39	26	V. NOVOSELSKI	BG	R. MITOV	BG	4h11m21s	1h11m52s	36m 0s	Lada VFTS	B-9
40	70	R. KEPKA	PL	J. BIASION	PL	4h12m45s	1h13m16s	5m 0s	PF 126p	A-5
41	59	H. KRYSTON	PL	L. CHLONICKI	PL	4h15m14s	1h15m45s	3m 0s	FSO 1500	A-6
42	42	C. WRZECIAN	F	A. WRZECIAN	F	4h30m 3s	1h30m34s	6m 0s	VW Golf GTI	A-6
43	84	K. KOSITZKE	D	H. PEITZMEIER	D	4h45m18s	1h45m49s	9m 0s	Chrysler R40C Sunb.	N-2

43 Rajd
Polski
Mistrzostwa Europy

08-07-1986/18:42:46

4-6 LIPCA 1986
WROCLAW

43 Rallye International
de Pologne
Championnat d'Europe

4-6 JUILLET 1986
WROCLAW

ENSCH Computer Service, Luxembourg

KLASYFIKACJA GENERALNA - OFICJALNA
CLASSEMENT GENERAL - OFFICIEL

GRUPA B
GROUPE B

M-ce Pl.	Nr No	1-szy Kierowca Pilote	Nar. Nat.	2-gi Kierowca Co-pilote	Nar. Nat.	Czas Temps	Roznica Ecart	Kary Penal	Samochod Voiture	Gr.-kl. Gr.-cl.
1	5	B. KUZMIC	YU	R. SALI	YU	2h59m29s			Renault 5 Turbo	B-9
2	14	J. SZERLA	PL	M. OZIEBLO	PL	3h 2m41s	0h 3m12s		Polonez 2000C	B-9
3	12	E. TOUMALIAVITCHUS	SU	P. VIDEIKA	SU	3h 5m24s	0h 5m55s		Lada VFYS	B-9
4	19	P. JANEBA	CS	J. KRECMAN	CS	3h 5m52s	0h 6m23s		Skoda 130 LR	B-9
5	7	V. SOOTS	SU	T. POUTMAKER	SU	3h 8m21s	0h 8m52s		Lada VFYS	B-9
6	24	J. TRAJBOLD	CS	V. ZELINKA	CS	3h 8m53s	0h 9m24s		Skoda 130 LR	B-9
7	8	V. BLACHNA	CS	P. SCHOVANEK	CS	3h 9m33s	0h10m 4s		Lada 2105 MTX	B-9
8	21	R. RUUTEL	SU	T. VOUNN	SU	3h12m11s	0h12m42s		Lada VFYS	B-9
9	11	G. PETROV	BG	I. TONEV	BG	3h14m43s	0h15m14s		Lada VFYS	B-9
10	23	I. TAMMEKA	SU	A. KOULGEVEE	SU	3h20m12s	0h20m43s		Lada VFYS	B-9
11	18	N. NIKOLOV	BG	K. PETROV	BG	3h21m56s	0h22m27s	1m 0s	Lada VFYS	B-9
12	25	R. ADAMEK	PL	Z. BARAN	PL	3h26m19s	0h26m50s		Polonez 2000	B-9
13	22	I. TOPLODOLSKI	BG	A. TCHAKAROV	BG	3h27m15s	0h27m46s		Lada VFYS	B-9
14	17	A. PIKKOUOUS	SU	A. TIMOUSK	SU	3h37m54s	0h38m25s	21m 0s	Lada VFYS	B-9
15	29	A. BLOSSEY	DDR	B. NOETZEL	DDR	3h38m14s	0h38m45s		Lada VFYS	B-9
16	26	V. NOVOSELSKI	BG	R. MITOV	BG	4h11m21s	1h11m52s	36m 0s	Lada VFYS	B-9

KLASYFIKACJA GENERALNA - OFICJALNA
CLASSEMENT GENERAL - OFFICIEL

GRUPA B KLASA 9
GROUPE B CLASSE 9

M-ce Pl.	Nr No	1-szy Kierowca Pilote	Nar. Nat.	2-gi Kierowca Co-pilote	Nar. Nat.	Czas Temps	Roznica Ecart	Kary Penal	Samochod Voiture	Gr.-kl. Gr.-cl.
1	5	B. KUZMIC	YU	R. SALI	YU	2h59m29s			Renault 5 Turbo	B-9
2	14	J. SZERLA	PL	M. OZIEBLO	PL	3h 2m41s	0h 3m12s		Polonez 2000C	B-9
3	12	E. TOUMALIAVITCHUS	SU	P. VIDEIKA	SU	3h 5m24s	0h 5m55s		Lada VFYS	B-9
4	19	P. JANEBA	CS	J. KRECMAN	CS	3h 5m52s	0h 6m23s		Skoda 130 LR	B-9
5	7	V. SOOTS	SU	T. POUTMAKER	SU	3h 8m21s	0h 8m52s		Lada VFYS	B-9
6	24	J. TRAJBOLD	CS	V. ZELINKA	CS	3h 8m53s	0h 9m24s		Skoda 130 LR	B-9
7	8	V. BLACHNA	CS	P. SCHOVANEK	CS	3h 9m33s	0h10m 4s		Lada 2105 MTX	B-9
8	21	R. RUUTEL	SU	T. VOUNN	SU	3h12m11s	0h12m42s		Lada VFYS	B-9
9	11	G. PETROV	BG	I. TONEV	BG	3h14m43s	0h15m14s		Lada VFYS	B-9
10	23	I. TAMMEKA	SU	A. KOULGEVEE	SU	3h20m12s	0h20m43s		Lada VFYS	B-9
11	18	N. NIKOLOV	BG	K. PETROV	BG	3h21m56s	0h22m27s	1m 0s	Lada VFYS	B-9
12	25	R. ADAMEK	PL	Z. BARAN	PL	3h26m19s	0h26m50s		Polonez 2000	B-9
13	22	I. TOPLODOLSKI	BG	A. TCHAKAROV	BG	3h27m15s	0h27m46s		Lada VFYS	B-9
14	17	A. PIKKOUOUS	SU	A. TIMOUSK	SU	3h37m54s	0h38m25s	21m 0s	Lada VFYS	B-9
15	29	A. BLOSSEY	DDR	B. NOETZEL	DDR	3h38m14s	0h38m45s		Lada VFYS	B-9
16	26	V. NOVOSELSKI	BG	R. MITOV	BG	4h11m21s	1h11m52s	36m 0s	Lada VFYS	B-9

43 Rajd
Polski
Mistrzostwa Europy

4-6 LIPCA 1986
WROCLAW

08-07-1986/18:43:18

43 Rallye International
de Pologne
Championnat d'Europe

4-6 JUILLET 1986
WROCLAW

ENSCH Computer Service , Luxembourg

KLASYFIKACJA GENERALNA - OFICJALNA
CLASSEMENT GENERAL - OFFICIEL

GRUPA A
GROUPE A

M-ce Pl.	Nr No	1-szy Kierowca Pilote	Nar. Nat.	2-gi Kierowca Co-pilote	Nar. Nat.	Czas Temps	Roznica Ecart	Kary Penal	Samochod Voiture	Gr-kl. Gr-cl.
1	4	A. KOPER	PL	K. GEBORYS	PL	3h 1m50s		1m 0s	Renault 11 Turbo	A-6
2	3	B. KRUPA	PL	P. MYSTKOWSKI	PL	3h 6m40s	0h 4m50s		Renault 5 Turbo GT	A-6
3	50	L. ORSKI	PL	T. CHMIEL	PL	3h14m51s	0h13m 1s		VW Golf	A-6
4	38	F. FOELLING	D	H. KRAMER	D	3h26m31s	0h24m41s		Mitsubishi Lanser TB	A-7
5	39	H. BISCHOFF	D	H. SCHULZE	D	3h27m33s	0h25m43s		VW Golf GTI	A-6
6	68	E. UTH	DDR	V. HOF SOMMER	DDR	3h28m23s	0h26m33s		W 353	A-5
7	54	P. KUFREJ	PL	J. LIS	PL	3h29m52s	0h28m 2s		FSO 1600	A-6
8	43	M. SADOWSKI	PL	K. SKALSKI	PL	3h31m24s	0h29m34s		FSO 1500	A-6
9	64	M. ANDRE POYAUD	F	D. ANDRE POYAUD	F	3h32m52s	0h31m 2s		Talbot 51 a	A-5
10	52	B. HERINK	PL	B. STEPKOWSKA	PL	3h34m21s	0h32m31s		FSO 1600	A-6
11	83	D.W. SCHULTZ	D	H. LOHNDORF	D	3h34m53s	0h33m 3s	1m 0s	Toyota Corolla 16VGT	A-6
12	65	P. HUISMAN	SF	S. SALMINEN	SF	3h35m44s	0h33m54s	2m 0s	Toyota Starlet	A-5
13	37	H. KOLBY HANSEN	DK	I. HILDEBRANDT	DK	3h37m36s	0h35m46s	12m 0s	Mitsubishi Lans.1800	A-7
14	49	A. BIALOWAS	PL	J. SEKOWSKI	PL	3h39m33s	0h37m43s		FSO 1600	A-6
15	41	T. DAHN	D	R. MALM	D	3h44m 6s	0h42m16s		BMW 320i	A-6
16	57	M. RYNDAK	PL	J. SOLTYS	PL	3h45m34s	0h43m44s		FSO 1500	A-6
17	58	J. PANICZ	PL	M. FLISOWSKI	PL	3h46m41s	0h44m51s		FSO 1600	A-6
18	71	S. STRAUCH	DDR	W. MARR	DDR	3h47m59s	0h46m 9s	2m 0s	W 353	A-5
19	44	E. VESSTROM	S	M. SCHMIDT	S	3h49m25s	0h47m35s		Subaru 4 WD Touring	A-6
20	56	W. STEC	PL	J. BIGOS	PL	3h50m 3s	0h48m13s	1m 0s	Opel Manta	A-6
21	73	R. FROELICH	DDR	W. MAIER	DDR	3h57m36s	0h55m46s	12m 0s	W 353	A-5
22	70	R. KEPKA	PL	J. BIASION	PL	4h12m45s	1h10m55s	5m 0s	PF 126p	A-5
23	59	H. KRYSTON	PL	L. CHLODNICKI	PL	4h15m14s	1h13m24s	3m 0s	FSO 1500	A-6
24	42	C. WRZECIAN	F	A. WRZECIAN	F	4h30m 3s	1h28m13s	6m 0s	VW Golf GTI	A-6

KLASYFIKACJA GENERALNA - OFICJALNA
CLASSEMENT GENERAL - OFFICIEL

GRUPA A
GROUPE A

KLASA 7
CLASSE 7

M-ce Pl.	Nr No	1-szy Kierowca Pilote	Nar. Nat.	2-gi Kierowca Co-pilote	Nar. Nat.	Czas Temps	Roznica Ecart	Kary Penal	Samochod Voiture	Gr-kl. Gr-cl.
1	38	F. FOELLING	D	H. KRAMER	D	3h26m31s			Mitsubishi Lanser TB	A-7
2	37	H. KOLBY HANSEN	DK	I. HILDEBRANDT	DK	3h37m36s	0h11m 5s	12m 0s	Mitsubishi Lans.1800	A-7

KLASYFIKACJA GENERALNA - OFICJALNA
CLASSEMENT GENERAL - OFFICIEL

GRUPA A
GROUPE A

KLASA 6
CLASSE 6

M-ce Pl.	Nr No	1-szy Kierowca Pilote	Nar. Nat.	2-gi Kierowca Co-pilote	Nar. Nat.	Czas Temps	Roznica Ecart	Kary Penal	Samochod Voiture	Gr-kl. Gr-cl.
1	4	A. KOPER	PL	K. GEBORYS	PL	3h 1m50s		1m 0s	Renault 11 Turbo	A-6
2	3	B. KRUPA	PL	P. MYSTKOWSKI	PL	3h 6m40s	0h 4m50s		Renault 5 Turbo GT	A-6
3	50	L. ORSKI	PL	T. CHMIEL	PL	3h14m51s	0h13m 1s		VW Golf	A-6
4	39	H. BISCHOFF	D	H. SCHULZE	D	3h27m33s	0h25m43s		VW Golf GTI	A-6
5	54	P. KUFREJ	PL	J. LIS	PL	3h29m52s	0h28m 2s		FSO 1600	A-6

43 Rajd
Polski
Mistrzostwa Europy

08-07-1986/18:43:51

4-6 LIPCA 1986
WROCLAW

43 Rallye International
de Pologne
Championnat d'Europe

4-6 JUILLET 1986
WROCLAW

ENSCH Computer Service , Luxembourg

KLASYFIKACJA GENERALNA - OFICJALNA
CLASSEMENT GENERAL - OFFICIEL

GRUPA A KLASA 6
GROUPE A CLASSE 6

M-ce Pl.	Nr No	1-szy Kierowca Pilote	Nar. Nat.	2-gi Kierowca Co-pilote	Nar. Nat.	Czas Temps	Roznica Ecart	Kary Penal	Samochod Voiture	Gr-k1. Gr-cl.
6	43	M. SADOWSKI	PL	K. SKALSKI	PL	3h31m24s	0h29m34s		FSO 1500	A-6
7	52	B. HERINK	PL	B. STEPKOWSKA	PL	3h34m21s	0h32m31s		FSO 1600	A-6
8	83	D.W. SCHULTZ	D	H. LOHNDORF	D	3h34m53s	0h33m 3s	1m 0s	Toyota Corolla 16VGT	A-6
9	49	A. BIALONAS	PL	J. SEKOWSKI	PL	3h39m33s	0h37m43s		FSO 1600	A-6
10	41	T. DAHN	D	R. MALM	D	3h44m 6s	0h42m16s		BMW 320i	A-6
11	57	M. RYNDAK	PL	J. SOLTYS	PL	3h45m34s	0h43m44s		FSO 1500	A-6
12	58	J. PANICZ	PL	M. FLISOWSKI	PL	3h46m41s	0h44m51s		FSO 1600	A-6
13	44	E. VESSTROM	S	M. SCHMIDT	S	3h49m25s	0h47m35s		Subaru 4 WD Touring	A-6
14	56	W. STEC	PL	J. BIGOS	PL	3h50m 3s	0h48m13s	1m 0s	Opel Manta	A-6
15	59	H. KRYSTON	PL	L. CHLONICKI	PL	4h15m14s	1h13m24s	3m 0s	FSO 1500	A-6
16	42	C. WRZECIAN	F	A. WRZECIAN	F	4h30m 3s	1h28m13s	6m 0s	VW Golf GTI	A-6

KLASYFIKACJA GENERALNA - OFICJALNA
CLASSEMENT GENERAL - OFFICIEL

GRUPA A KLASA 5
GROUPE A CLASSE 5

M-ce Pl.	Nr No	1-szy Kierowca Pilote	Nar. Nat.	2-gi Kierowca Co-pilote	Nar. Nat.	Czas Temps	Roznica Ecart	Kary Penal	Samochod Voiture	Gr-k1. Gr-cl.
1	68	E. UTH	DDR	V. HÖFSOMMER	DDR	3h28m23s			W 353	A-5
2	64	M. ANDRE POVAUD	F	D. ANDRE POVAUD	F	3h32m52s	0h 4m29s		Talbot 51 a	A-5
3	65	P. HUISMAN	SF	S. SALMINEN	SF	3h35m44s	0h 7m21s	2m 0s	Toyota Starlet	A-5
4	71	S. STRAUCH	DDR	W. MARR	DDR	3h47m59s	0h19m36s	2m 0s	W 353	A-5
5	73	R. FROEHLICH	DDR	W. MAIER	DDR	3h57m36s	0h29m13s	12m 0s	W 353	A-5
6	70	R. KEPKA	PL	J. BIASION	PL	4h12m45s	0h44m22s	5m 0s	PF 126p	A-5

KLASYFIKACJA GENERALNA - OFICJALNA
CLASSEMENT GENERAL - OFFICIEL

GRUPA N
GROUPE N

M-ce Pl.	Nr No	1-szy Kierowca Pilote	Nar. Nat.	2-gi Kierowca Co-pilote	Nar. Nat.	Czas Temps	Roznica Ecart	Kary Penal	Samochod Voiture	Gr-k1. Gr-cl.
1	79	R. REINDL	D	K. WENDEL	D	3h16m 0s			Toyota Corolla GT	N-2
2	85	A. LUBIAK	PL	A. CHITRYNIEWICZ	PL	3h21m35s	0h 5m35s		Toyota Corolla TW16v	N-2
3	84	K. KOSITZKE	D	H. PEITZMEIER	D	4h45m18s	1h29m18s	9m 0s	Chrysler R4DC Sunb.	N-2

KLASYFIKACJA GENERALNA - OFICJALNA
CLASSEMENT GENERAL - OFFICIEL

GRUPA N KLASA 2
GROUPE N CLASSE 2

M-ce Pl.	Nr No	1-szy Kierowca Pilote	Nar. Nat.	2-gi Kierowca Co-pilote	Nar. Nat.	Czas Temps	Roznica Ecart	Kary Penal	Samochod Voiture	Gr-k1. Gr-cl.
1	79	R. REINDL	D	K. WENDEL	D	3h16m 0s			Toyota Corolla GT	N-2
2	85	A. LUBIAK	PL	A. CHITRYNIEWICZ	PL	3h21m35s	0h 5m35s		Toyota Corolla TW16v	N-2
3	84	K. KOSITZKE	D	H. PEITZMEIER	D	4h45m18s	1h29m18s	9m 0s	Chrysler R4DC Sunb.	N-2

43 Rajd
Polski
Mistrzostwa Europy

4-6 LIPCA 1986
WROCLAW

43 Rallye International
de Pologne
Championnat d'Europe

4-6 JUILLET 1986
WROCLAW

07-07-1986/06:43:48

ENSCH Computer Service, Luxembourg

ZBIORCZA TABELA CZASOW NA ODCINKACH SPECJALNYCH (BEZ KLASYFIKACJI)
TABLEAU GENERAL DES TEMPS REALISES DANS LES EPREUVES (PAS DU CLASSEMENT)

M-ce Nr Pl. No	Czas laczny Total	Roznica Ecart	Kary Penal	Odcinek nr Epreuve no	Odcinek nr Epreuve no	Odcinek nr Epreuve no	Odcinek nr Epreuve no	Odcinek nr Epreuve no	Odcinek nr Epreuve no	Odcinek nr Epreuve no	Odcinek nr Epreuve no
				1	2	3	4	5	6	7	8
*** 1	*****	*****	*****	0h 2m13s	0h 3m31s	0h 6m50s	0h 1m33s	0h 4m54s	0h 6m32s	*****	0h 3m39s
*** 2	*****	*****	*****	0h 2m14s	0h 3m 8s	0h 7m 5s	0h 1m32s	*****	*****	*****	*****
*** 3	*****	*****	*****	0h 2m30s	0h 3m51s	0h 7m40s	0h 1m49s	0h 5m19s	0h 7m 2s	*****	0h 3m46s
*** 4	*****	*****	*****	0h 2m18s	0h 3m37s	0h 7m37s	0h 1m42s	0h 5m10s	0h 6m52s	*****	0h 3m36s
*** 5	*****	*****	*****	0h 2m14s	0h 3m43s	0h 7m28s	0h 1m41s	0h 5m13s	0h 6m51s	*****	0h 3m29s
*** 7	*****	*****	*****	0h 2m21s	0h 3m58s	0h 7m48s	0h 1m51s	0h 5m29s	0h 7m22s	*****	0h 3m42s
*** 8	*****	*****	*****	0h 2m23s	0h 4m 2s	0h 7m53s	0h 1m52s	0h 5m33s	0h 7m37s	*****	0h 3m54s
*** 9	*****	*****	*****	0h 2m16s	0h 3m44s	0h 7m44s	0h 1m46s	0h 5m17s	0h 7m 3s	*****	0h 3m54s
*** 11	*****	*****	*****	0h 2m25s	0h 3m59s	0h 8m14s	0h 1m51s	0h 5m30s	0h 7m28s	*****	0h 3m56s
*** 12	*****	*****	*****	0h 2m17s	0h 3m54s	0h 7m44s	0h 1m48s	0h 5m27s	0h 7m10s	*****	0h 3m35s
*** 14	*****	*****	*****	0h 2m19s	0h 3m54s	0h 7m45s	0h 1m46s	0h 5m18s	0h 7m 5s	*****	0h 3m38s
*** 15	*****	*****	*****	0h 2m20s	0h 4m 3s	0h 9m11s	0h 1m51s	0h 5m29s	0h 7m25s	*****	0h 3m58s
*** 17	*****	*****	*****	0h 2m23s	0h 4m 8s	0h 8m11s	0h 1m53s	0h 5m35s	0h 7m57s	*****	0h 4m 4s
*** 18	*****	*****	*****	0h 2m31s	0h 4m18s	0h 8m39s	0h 1m58s	0h 5m53s	0h 7m57s	*****	0h 4m 9s
*** 19	*****	*****	*****	0h 2m23s	0h 3m53s	0h 7m49s	0h 1m49s	0h 5m21s	0h 7m19s	*****	0h 3m47s
*** 21	*****	*****	*****	0h 2m23s	0h 4m 2s	0h 7m55s	0h 1m53s	0h 5m36s	0h 7m32s	*****	0h 3m51s
*** 22	*****	*****	*****	0h 2m39s	0h 4m18s	0h 8m30s	0h 1m59s	0h 5m54s	0h 7m58s	*****	0h 4m17s
*** 23	*****	*****	*****	0h 2m27s	0h 4m 3s	0h 8m12s	0h 1m49s	0h 5m36s	0h 7m17s	*****	0h 4m 1s
*** 24	*****	*****	*****	0h 2m26s	0h 4m 3s	0h 7m59s	0h 1m51s	0h 5m33s	0h 7m29s	*****	0h 3m51s
*** 25	*****	*****	*****	0h 2m42s	0h 4m29s	0h 8m39s	0h 2m 3s	0h 5m59s	0h 8m17s	*****	0h 4m13s
*** 26	*****	*****	*****	0h 2m24s	0h 4m16s	0h 8m38s	0h 1m58s	0h 5m46s	0h 8m 1s	*****	0h 4m18s
*** 27	*****	*****	*****	0h 2m21s	0h 3m56s	0h 8m 1s	0h 1m51s	0h 5m33s	0h 7m27s	*****	0h 3m56s
*** 28	*****	*****	*****	0h 2m33s	0h 4m51s	0h 9m10s	0h 2m12s	0h 6m42s	0h 8m53s	*****	0h 4m29s
*** 29	*****	*****	*****	0h 2m26s	0h 4m34s	0h15m18s	0h 2m11s	0h 6m 4s	0h 8m19s	*****	0h 4m13s
*** 30	*****	*****	*****	0h 2m22s	0h 4m10s	0h 8m12s	0h 1m52s	0h 5m37s	0h 7m29s	*****	0h 3m54s
*** 32	*****	*****	*****	0h 2m20s	0h 4m20s	0h 7m58s	0h 1m57s	0h 5m57s	0h 7m35s	*****	0h 4m 7s
*** 34	*****	*****	*****	0h 2m30s	0h 9m58s	0h 8m58s	0h 2m 8s	0h 5m55s	0h 8m 6s	*****	0h 4m51s
*** 36	*****	*****	*****	0h 2m18s	0h 4m 4s	0h 9m27s	0h 1m55s	0h 5m29s	0h 7m38s	*****	0h 3m56s
*** 37	*****	*****	*****	0h 2m21s	0h 3m52s	0h 8m14s	0h 1m48s	0h 5m35s	0h 7m39s	*****	0h 3m50s
*** 38	*****	*****	*****	0h 2m27s	0h 4m12s	0h 8m13s	0h 1m57s	0h 5m44s	0h 7m53s	*****	0h 4m 9s
*** 39	*****	*****	*****	0h 2m24s	0h 4m18s	0h 8m12s	0h 2m 1s	0h 5m48s	0h 8m 9s	*****	0h 4m22s
*** 41	*****	*****	*****	0h 2m36s	0h 4m45s	0h 8m35s	0h 2m 5s	0h 6m22s	0h 8m44s	*****	0h 4m45s
*** 42	*****	*****	*****	0h 2m43s	0h 5m 6s	0h 9m51s	0h 2m21s	0h 6m51s	0h 9m23s	*****	0h 5m29s
*** 43	*****	*****	*****	0h 2m32s	0h 4m44s	0h 8m57s	0h 2m 7s	0h 6m17s	0h 8m13s	*****	0h 4m22s
*** 44	*****	*****	*****	0h 2m35s	0h 5m 1s	0h 9m31s	0h 2m15s	0h 6m34s	0h 8m59s	*****	0h 4m48s
*** 46	*****	*****	*****	0h 2m21s	0h 4m14s	0h 8m32s	0h 1m59s	0h 5m56s	0h 7m48s	*****	0h 4m 6s
*** 47	*****	*****	*****	0h 2m28s	0h 4m24s	0h 8m43s	0h 2m 0s	0h 5m55s	*****	*****	*****
*** 48	*****	*****	*****	0h 2m25s	0h 4m12s	0h 8m26s	0h 1m58s	0h 5m50s	0h 8m 0s	*****	*****
*** 49	*****	*****	*****	0h 2m32s	0h10m33s	0h 8m53s	0h 2m 6s	0h 6m11s	0h 8m20s	*****	0h 4m15s
*** 50	*****	*****	*****	0h 2m15s	0h 4m23s	0h 7m47s	0h 1m51s	0h 5m29s	0h 7m31s	*****	0h 4m 2s
*** 52	*****	*****	*****	0h 2m30s	0h 4m32s	0h 8m42s	0h 2m21s	0h 5m56s	0h 8m11s	*****	0h 4m17s
*** 53	*****	*****	*****	0h 2m46s	0h 5m 6s	0h 9m27s	0h 2m17s	0h 6m30s	0h 8m51s	*****	*****

43 Rajd
Polski
Mistrzostwa Europy

4-6 LIPCA 1986
WROCLAW

43 Rallye International
de Pologne
Championnat d'Europe

4-6 JUILLET 1986
WROCLAW

07-07-1986/06:44:49

ENSCH Computer Service , Luxembourg

ZBIORCZA TABELA CZASOW NA ODCINKACH SPECJALNYCH (BEZ KLASYFIKACJI)
TABLEAU GENERAL DES TEMPS REALISES DANS LES EPREUVES (PAS DU CLASSEMENT)

M-ce Pl.	Nr No	Czas Total	Roznica Ecart	Kary Penal	Odcinek nr							
					1	2	3	4	5	6	7	8
***	54	*****	*****	*****	0h 2m29s	0h 4m30s	0h 8m46s	0h 2m 1s	0h 6m 5s	0h 8m16s	*****	0h 4m10s
***	55	*****	*****	*****	0h 5m 8s	0h 4m40s	*****	*****	*****	*****	*****	*****
***	56	*****	*****	*****	0h 2m30s	0h 4m26s	0h 8m29s	0h 2m 0s	0h13m 4s	0h10m50s	*****	0h 4m10s
***	57	*****	*****	*****	0h 2m39s	0h 4m46s	0h 9m19s	0h 2m10s	0h 7m16s	0h 8m37s	*****	0h 4m10s
***	58	*****	*****	*****	0h 2m33s	0h 4m46s	0h 9m 3s	0h 2m 9s	0h 6m 8s	0h 8m16s	*****	0h 4m10s
***	59	*****	*****	*****	0h 2m46s	0h 5m17s	0h 9m 6s	0h 2m24s	0h 6m40s	0h 9m23s	*****	0h 5m10s
***	63	*****	*****	*****	0h24m42s	*****	*****	*****	*****	*****	*****	*****
***	64	*****	*****	*****	0h 2m25s	0h 4m28s	0h 8m43s	0h 2m 6s	0h 5m59s	0h 8m23s	*****	0h 4m20s
***	65	*****	*****	*****	0h 2m29s	0h 4m37s	0h 8m46s	0h 2m 5s	0h 6m 6s	0h 8m24s	*****	0h 4m20s
***	66	*****	*****	*****	0h 2m37s	0h 5m38s	0h10m30s	0h 2m18s	0h 7m 0s	0h10m 0s	*****	0h 4m20s
***	67	*****	*****	*****	0h 2m39s	0h 5m39s	0h13m44s	0h 2m29s	0h 6m56s	0h 9m16s	*****	0h 4m20s
***	68	*****	*****	*****	0h 2m25s	0h 4m27s	0h 8m46s	0h 2m 3s	0h 6m 4s	0h 8m24s	*****	0h 4m 7s
***	69	*****	*****	*****	0h 2m27s	0h 4m48s	0h 9m18s	0h 2m32s	0h 8m30s	*****	*****	*****
***	70	*****	*****	*****	0h 2m43s	0h 5m21s	0h10m 8s	0h 2m33s	0h 7m 6s	0h 9m25s	*****	0h 4m10s
***	71	*****	*****	*****	0h 2m29s	0h 4m28s	0h 8m52s	0h 2m 6s	0h 6m 6s	0h 8m22s	*****	0h 4m10s
***	73	*****	*****	*****	0h 2m29s	0h 4m57s	0h12m59s	0h 2m14s	0h 6m30s	0h 8m55s	*****	0h 4m20s
***	77	*****	*****	*****	0h 2m23s	0h 8m 2s	0h 8m27s	0h 2m 2s	0h 5m57s	0h 8m12s	*****	0h 4m10s
***	79	*****	*****	*****	0h 2m19s	0h 4m 1s	0h 8m10s	0h 1m53s	0h 5m41s	0h 7m26s	*****	0h 3m40s
***	81	*****	*****	*****	0h 2m32s	0h 4m36s	0h 8m32s	0h 2m 4s	0h 6m13s	0h 8m39s	*****	0h 4m20s
***	82	*****	*****	*****	0h 2m30s	0h 4m26s	0h 8m33s	0h 2m 4s	0h 6m 2s	0h 8m11s	*****	0h 4m10s
***	83	*****	*****	*****	0h 2m27s	0h 4m27s	0h 8m21s	0h 2m 3s	0h 5m56s	0h 8m 8s	*****	0h 4m10s
***	84	*****	*****	*****	0h 2m41s	0h 5m 5s	0h 9m35s	0h 2m26s	0h 6m52s	0h 9m30s	*****	0h 5m 7s
***	85	*****	*****	*****	0h 2m19s	0h 4m 7s	0h 8m 8s	0h 1m56s	0h 5m50s	0h 7m44s	*****	0h 4m 7s

43 Rajd
Polski
Mistrzostwa Europy

4-6 LIPCA 1986
WROCLAW

07-07-1986/06:47:13

43 Rallye International
de Pologne
Championnat d'Europe

4-6 JUILLET 1986
WROCLAW

ENSCH Computer Service , Luxembourg

ZBIORCZA TABELA CZASOW NA ODCINKACH SPECJALNYCH (BEZ KLASYFIKACJI)
TABLEAU GENERAL DES TEMPS REALISES DANS LES EPREUVES (PAS DU CLASSEMENT)

M-ce Pl.	Nr No	Czas Total	Roznica Ecart	Kary Penal	Odcinek nr Epreuve no	Odcinek nr Epreuve no	Odcinek nr Epreuve no	Odcinek nr Epreuve no	Odcinek nr Epreuve no	Odcinek nr Epreuve no	Odcinek nr Epreuve no	Odcinek nr Epreuve no
					9	10	11	12	13	14	15	16
***	54	*****	*****	*****	0h 9m53s	*****	0h 5m37s	0h 4m20s	0h18m33s	0h 8m13s	0h 5m20s	0h10m49s
***	55	*****	*****	*****	*****	*****	*****	*****	*****	*****	*****	*****
***	56	*****	*****	*****	0h10m 4s	*****	0h 5m43s	0h 4m25s	0h18m54s	0h 8m51s	0h 5m32s	0h11m15s
***	57	*****	*****	*****	0h10m42s	*****	0h 6m 8s	0h 4m58s	0h20m11s	0h 9m 8s	0h 5m43s	0h11m45s
***	58	*****	*****	*****	0h10m54s	*****	0h 6m15s	0h 4m46s	0h21m16s	0h 9m33s	0h 5m57s	0h14m13s
***	59	*****	*****	*****	0h11m32s	*****	0h 6m49s	0h 4m59s	0h22m40s	0h 9m46s	0h 6m 5s	0h12m58s
***	63	*****	*****	*****	*****	*****	*****	*****	*****	*****	*****	*****
***	64	*****	*****	*****	0h10m18s	*****	0h 5m59s	0h 4m28s	0h19m43s	0h 8m54s	0h 5m18s	0h11m 4s
***	65	*****	*****	*****	0h10m28s	*****	0h 5m49s	0h 4m31s	0h19m35s	0h 8m32s	0h 5m24s	0h11m 6s
***	66	*****	*****	*****	0h11m 9s	*****	0h 6m36s	0h 4m56s	0h21m 7s	0h 9m28s	0h 5m41s	0h11m51s
***	67	*****	*****	*****	0h11m15s	*****	*****	*****	*****	*****	*****	*****
***	68	*****	*****	*****	0h 9m54s	*****	0h 5m39s	0h 4m25s	0h18m46s	0h 8m24s	0h 5m26s	0h11m 0s
***	69	*****	*****	*****	*****	*****	*****	*****	*****	*****	*****	*****
***	70	*****	*****	*****	0h11m13s	*****	0h 6m45s	0h 4m51s	0h20m38s	0h 9m 3s	0h 6m24s	0h12m17s
***	71	*****	*****	*****	0h 9m17s	*****	0h 5m45s	0h 4m25s	0h18m44s	0h19m 5s	0h 5m57s	0h12m29s
***	73	*****	*****	*****	0h10m44s	*****	0h 6m15s	0h 4m52s	0h20m19s	0h 8m40s	0h 5m32s	0h11m26s
***	77	*****	*****	*****	0h 9m44s	*****	0h 5m47s	0h 4m16s	0h19m18s	0h 8m 5s	0h 5m24s	0h10m30s
***	79	*****	*****	*****	0h 9m 2s	*****	0h 5m45s	0h 4m 6s	0h17m31s	0h 7m50s	0h 4m57s	0h 9m56s
***	81	*****	*****	*****	0h10m16s	*****	0h 5m47s	0h 4m30s	0h19m45s	0h 8m56s	0h 5m33s	0h11m 8s
***	82	*****	*****	*****	0h 9m51s	*****	0h 5m42s	0h 4m22s	0h18m50s	0h 8m32s	0h 5m24s	0h10m50s
***	83	*****	*****	*****	0h10m 6s	*****	0h 5m41s	0h 4m28s	0h19m34s	0h 8m39s	0h 5m24s	0h11m13s
***	84	*****	*****	*****	0h11m26s	*****	0h 6m55s	0h 5m 9s	0h23m36s	0h 9m53s	0h 6m15s	0h12m55s
***	85	*****	*****	*****	0h 9m10s	*****	0h 5m15s	0h 4m 2s	0h19m15s	0h 8m11s	0h 4m55s	0h10m24s

43 Rajd
Polski
Mistrzostwa Europy

07-07-1986/06:52:41

4-6 LIPCA 1986
WROCLAW

43 Rallye International
de Pologne
Championnat d'Europe

4-6 JUILLET 1986
WROCLAW

ENSCH Computer Service, Luxembourg

ZBIORCZA TABELA CZASOW NA ODCINKACH SPECJALNYCH (BEZ KLASYFIKACJI)
TABLEAU GENERAL DES TEMPS REALISES DANS LES EPREUVES (PAS DU CLASSEMENT)

M-ce	Nr	Czas	laczny	Roznica	Kary	Odcinek	nr	Odcinek	nr	Odcinek	nr	Odcinek	nr	Odcinek	nr	Odcinek	nr
Pl.	No	Total	Ecart	Penal		Epreuve	no	Epreuve	no	Epreuve	no	Epreuve	no	Epreuve	no	Epreuve	no
						25	26	27	28	29	30	31	32				
***	54	*****	*****	*****	*****	0h 7m38s	0h11m32s	0h 6m11s	0h 7m44s	0h 4m34s	0h 6m 3s	0h 2m 1s	0h 2m 5s				
***	55	*****	*****	*****	*****	*****	*****	*****	*****	*****	*****	*****	*****				
***	56	*****	*****	*****	*****	0h 8m 7s	0h11m58s	0h 6m 4s	0h 7m52s	0h 4m46s	0h 7m22s	0h 2m56s	0h 2m 1s				
***	57	*****	*****	*****	*****	0h 8m 8s	0h12m 2s	0h 6m17s	0h 7m55s	0h 4m54s	0h 7m38s	0h 2m10s	0h 2m11s				
***	58	*****	*****	*****	*****	0h 7m53s	0h11m51s	0h 6m 9s	0h 7m56s	0h 4m33s	0h 6m18s	0h 2m 7s	0h 2m 9s				
***	59	*****	*****	*****	*****	0h 9m58s	0h12m57s	0h 6m43s	0h 8m31s	0h 5m54s	0h11m23s	0h 2m22s	0h 2m14s				
***	63	*****	*****	*****	*****	*****	*****	*****	*****	*****	*****	*****	*****				
***	64	*****	*****	*****	*****	0h 7m46s	0h11m20s	0h 5m55s	0h 7m21s	0h 4m27s	0h 6m30s	0h 1m57s	0h 2m 1s				
***	65	*****	*****	*****	*****	0h 7m40s	0h11m36s	0h 5m57s	0h 7m40s	0h 4m30s	0h 6m25s	0h 2m 1s	0h 2m 1s				
***	66	*****	*****	*****	*****	*****	*****	*****	*****	*****	*****	*****	*****				
***	67	*****	*****	*****	*****	*****	*****	*****	*****	*****	*****	*****	*****				
***	68	*****	*****	*****	*****	0h 7m30s	0h11m20s	0h 6m 2s	0h 7m18s	0h 4m27s	0h 5m55s	0h 1m58s	0h 2m 0s				
***	69	*****	*****	*****	*****	*****	*****	*****	*****	*****	*****	*****	*****				
***	70	*****	*****	*****	*****	0h 8m 3s	0h13m10s	0h 7m 4s	0h 7m59s	0h 5m 0s	0h 6m36s	0h 2m23s	0h 2m15s				
***	71	*****	*****	*****	*****	0h 7m57s	0h11m24s	0h 6m 4s	0h 7m33s	0h 5m58s	0h 7m 9s	0h 2m 3s	0h 2m 7s				
***	73	*****	*****	*****	*****	0h 7m38s	0h11m53s	0h 6m19s	0h 7m35s	0h 6m30s	0h 6m41s	0h 2m29s	0h 2m13s				
***	77	*****	*****	*****	*****	*****	*****	*****	*****	*****	*****	*****	*****				
***	79	*****	*****	*****	*****	0h 7m33s	0h10m17s	0h 5m39s	0h 6m46s	0h 4m25s	0h 6m 1s	0h 1m46s	0h 1m54s				
***	81	*****	*****	*****	*****	*****	*****	*****	*****	*****	*****	*****	*****				
***	82	*****	*****	*****	*****	*****	*****	*****	*****	*****	*****	*****	*****				
***	83	*****	*****	*****	*****	0h 7m58s	0h11m24s	0h 5m58s	0h 7m47s	0h 4m45s	0h 6m54s	0h 2m 1s	0h 2m 3s				
***	84	*****	*****	*****	*****	0h 8m59s	0h15m44s	0h13m44s	0h 8m37s	0h10m13s	0h 8m23s	0h 2m21s	0h17m52s				
***	85	*****	*****	*****	*****	0h 7m47s	0h10m38s	0h 5m37s	0h 7m 4s	0h 4m44s	0h 6m46s	0h 1m55s	0h 1m57s				

43 Rajd
Polski
Mistrzostwa Europy

4-6 LIPCA 1986
WROCLAW

43 Rallye International
de Pologne
Championnat d'Europe

4-6 JUILLET 1986
WROCLAW

07-07-1986/06:53:49

ENSCH Computer Service, Luxembourg

ZBIORCZA TABELA CZASOW NA ODCINKACH SPECJALNYCH (BEZ KLASYFIKACJI)
TABLEAU GENERAL DES TEMPS REALISES DANS LES EPREUVES (PAS DU CLASSEMENT)

M-ce	Nr	Czas	Roznica	Kary	Odcinek nr	Odcinek nr	Odcinek nr	Odcinek nr	Odcinek nr	Odcinek nr	Odcinek nr	Odcinek nr
Pl.	No	Total	Ecart	Penal	Epreuve no	Epreuve no	Epreuve no	Epreuve no	Epreuve no	Epreuve no	Epreuve no	Epreuve no
					33	34						
***	1	*****	*****	*****	*****	*****						
***	2	*****	*****	*****	*****	*****						
***	3	*****	*****	*****	0h10m 5s	0h 3m31s						
***	4	*****	*****	*****	0h11m11s	0h 3m27s						
***	5	*****	*****	*****	0h10m42s	0h 3m24s						
***	7	*****	*****	*****	0h11m36s	0h 3m33s						
***	8	*****	*****	*****	0h11m 9s	0h 3m34s						
***	9	*****	*****	*****	*****	*****						
***	11	*****	*****	*****	0h10m13s	0h 3m48s						
***	12	*****	*****	*****	0h10m51s	0h 3m33s						
***	14	*****	*****	*****	0h10m51s	0h 3m31s						
***	15	*****	*****	*****	*****	*****						
***	17	*****	*****	*****	0h11m57s	0h 3m47s						
***	18	*****	*****	*****	0h10m47s	0h 3m46s						
***	19	*****	*****	*****	0h10m39s	0h 3m38s						
***	21	*****	*****	*****	0h10m19s	0h 3m47s						
***	22	*****	*****	*****	0h11m45s	0h 3m50s						
***	23	*****	*****	*****	0h10m45s	0h 3m48s						
***	24	*****	*****	*****	0h10m 5s	0h 3m42s						
***	25	*****	*****	*****	0h10m11s	0h 4m 2s						
***	26	*****	*****	*****	0h13m15s	0h 4m14s						
***	27	*****	*****	*****	*****	*****						
***	28	*****	*****	*****	*****	*****						
***	29	*****	*****	*****	0h11m42s	0h 3m57s						
***	30	*****	*****	*****	*****	*****						
***	32	*****	*****	*****	*****	*****						
***	34	*****	*****	*****	*****	*****						
***	36	*****	*****	*****	*****	*****						
***	37	*****	*****	*****	0h11m39s	0h 3m43s						
***	38	*****	*****	*****	0h11m48s	0h 3m52s						
***	39	*****	*****	*****	0h11m15s	0h 3m51s						
***	41	*****	*****	*****	0h12m10s	0h 4m 7s						
***	42	*****	*****	*****	0h14m11s	0h 4m30s						
***	43	*****	*****	*****	0h12m36s	0h 4m10s						
***	44	*****	*****	*****	0h12m45s	0h 4m11s						
***	46	*****	*****	*****	*****	*****						
***	47	*****	*****	*****	*****	*****						
***	48	*****	*****	*****	*****	*****						
***	49	*****	*****	*****	0h12m13s	0h 4m10s						
***	50	*****	*****	*****	0h11m23s	0h 3m36s						
***	52	*****	*****	*****	0h12m22s	0h 4m 6s						
***	53	*****	*****	*****	*****	*****						

43 Rajd
Polski
Mistrzostwa Europy

4-6 LIPCA 1986
WROCLAW

43 Rallye International
de Pologne
Championnat d'Europe

4-6 JUILLET 1986
WROCLAW

07-07-1986/06:54:29

ENSCH Computer Service , Luxembourg

ZBIORCZA TABELA CZASOW NA ODCINKACH SPECJALNYCH (BEZ KLASYFIKACJI)
TABLEAU GENERAL DES TEMPS REALISES DANS LES EPREUVES (PAS DU CLASSEMENT)

M-ce	Nr	Czas laczny	Roznica	Kary	Odcinek nr	Odcinek nr	Odcinek nr	Odcinek nr	Odcinek nr	Odcinek nr	Odcinek nr	Odcinek nr
P1.	No	Total	Ecart	Penal	Epreuve no	Epreuve no	Epreuve no	Epreuve no	Epreuve no	Epreuve no	Epreuve no	Epreuve no
					33	34						
***	54	*****	*****	*****	Øh12m26s	Øh 4m 9s						
***	55	*****	*****	*****	*****	*****						
***	56	*****	*****	*****	Øh15m 9s	Øh 4m 9s						
***	57	*****	*****	*****	Øh12m52s	Øh 4m51s						
***	58	*****	*****	*****	Øh12m36s	Øh 4m 8s						
***	59	*****	*****	*****	Øh14m56s	Øh 4m31s						
***	63	*****	*****	*****	*****	*****						
***	64	*****	*****	*****	Øh12m 8s	Øh 4m 7s						
***	65	*****	*****	*****	Øh12m 9s	Øh 4m 4s						
***	66	*****	*****	*****	*****	*****						
***	67	*****	*****	*****	*****	*****						
***	68	*****	*****	*****	Øh12m 3s	Øh 4m 2s						
***	69	*****	*****	*****	*****	*****						
***	70	*****	*****	*****	Øh12m54s	Øh 4m35s						
***	71	*****	*****	*****	Øh12m20s	Øh 4m 1s						
***	73	*****	*****	*****	Øh12m33s	Øh 4m16s						
***	77	*****	*****	*****	*****	*****						
***	79	*****	*****	*****	Øh11m52s	Øh 3m48s						
***	81	*****	*****	*****	*****	*****						
***	82	*****	*****	*****	*****	*****						
***	83	*****	*****	*****	Øh11m56s	Øh 3m59s						
***	84	*****	*****	*****	Øh12m37s	Øh 5m58s						
***	85	*****	*****	*****	Øh11m49s	Øh 3m46s						